



Get the latest updates on the renovation of Mayville State's historic Old Main! Follow progress, upcoming projects, and more as PCL/Community Contractors work to preserve its legacy and shape its future.

PROGRESS UPDATES

- Basement:** The east side framing is now complete, establishing the layout for future rooms and corridors. Crews are actively installing MEPF rough-ins, including mechanical ductwork for HVAC systems, electrical box placement for future power and data, and fire sprinkler piping to meet life-safety requirements. This phase is critical, as these systems are installed behind walls before finishes begin.
- First floor:** Sheetrock (drywall) installation is nearing completion, defining interior walls and ceilings. Next, crews will begin mudding, taping, and sanding joints to create a smooth, paint-ready surface. This step transforms framed spaces into finished rooms and prepares the area for final finishes.
- Second floor:** Painting of the first coat in rooms is nearly complete, marking a major visual milestone. Flooring installation has started, signaling the transition from rough construction to finish work. Once flooring is in place, additional trim and fixtures can follow.
- Third floor:** Framing and door installation are about halfway complete. This includes building wall systems and setting door frames, which establish room layouts and circulation paths throughout the floor.
- Fourth floor:** Final trim-out is nearly complete, including installation of outlets, switches, and lighting fixtures. This is one of the last steps before spaces are fully functional and ready for occupancy.
- Exterior:** The North Entry stone installation is complete, giving a finished look to one of the building's primary access points and enhancing both durability and appearance.



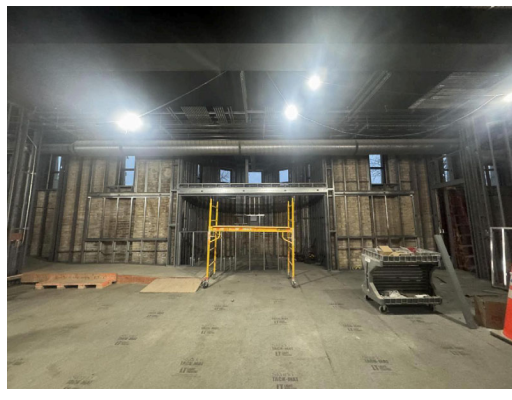
North Entry: Stonework is complete, and a final cleaning will remove grout haze and bring out the full color and detail of the stone.



4th Floor: Pilasters showing off new lighting that is being installed, and finish millwork.



2nd Floor: Walls have been sanded and received their first coat of paint. This allows follow-on trades to begin installing finishes like trim, fixtures and casework.



Theater Sound Booth: Framing complete. This space will house audio and lighting controls, serving as the operational hub for performances and events.

UPCOMING WORK

As temperatures rise, the project will shift focus to exterior progress. Site electrical work and concrete placement will be a major priority after a winter spent working indoors. The curtain wall system for the north lobby—a large glass exterior feature that will bring natural light into the space—has been measured and is currently in fabrication. Installation is expected in the coming weeks.

Inside the building, crews will begin installing ceiling grid systems in hallways and classrooms, which will support acoustic ceiling tiles and lighting. Additional electrical trim-out and installation of restroom accessories, including grab bars, will also continue.

DID YOU KNOW?

During excavation at Old Main, crews uncovered three previously buried smokestack bases and a historic tunnel. These features had been covered during past renovations and offer insight into how the building was originally heated and operated many years ago.

QUALITY CORNER

With site work ramping up, maintaining quality now prevents costly rework later:

- Mark and protect new utilities** with cones, flags, or barriers to avoid accidental damage from equipment.
- Confirm that frost is fully out of the ground** before placing backfill or pouring concrete—frozen soil can lead to settling, cracking, and long-term structural issues.
- Monitor soil conditions daily**, as spring thaw can create inconsistent compaction.

SAFETY TOPIC

Spring conditions bring new safety considerations:

- Always call for utility locates before digging** to prevent striking underground lines.
- Be extra cautious in road construction zones**, which increase this time of year—slow down and follow all posted signage.
- Prepare for rapid temperature changes** by dressing in layers and staying hydrated throughout the day.
- Watch for muddy and unstable ground conditions**, which can create slip hazards and affect equipment stability.



This project is funded through appropriates made by the North Dakota 68th Legislative Assembly.