



MAYVILLE STATE UNIVERSITY

Old Main Renovation

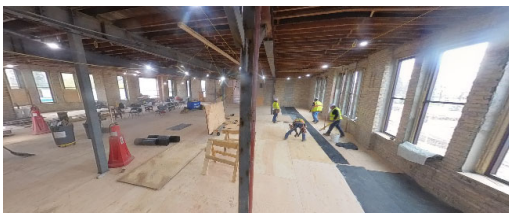
Jobsite Newsletter

Get the latest updates on the renovation of Mayville State's historic Old Main! Follow progress, upcoming projects, and more as PCL/Community Contractors work to preserve its legacy and shape its future.



PROGRESS UPDATES

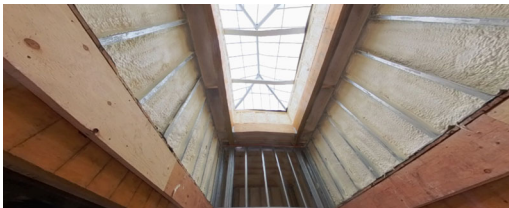
- **Basement:** Structural upgrades are complete, theater build-out has begun.
- **First floor:** Structural upgrades are at 90%, some MEPF overhead installation has begun.
- **Second floor:** Wall framing is complete, overhead MEPF installation is complete, in-wall MEPF installation is starting.
- **Third floor:** Framing is complete, overhead MEPF installation is complete, in-wall MEPF installation is at 85%.
- **Fourth floor:** Brick facade on both East and West additions are 60%, skylights are installed, roof system is at 90%.



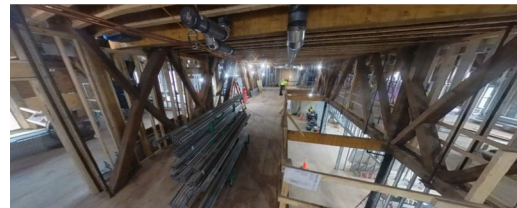
First Floor: Subfloor replacement.



Theater.



Mezzanine new skylight.



Third Floor.



UPCOMING WORK

- **Fourth floor:** Drywall finish and painting
- **Third floor:** Wall insulation and drywall
- **Second floor:** Complete MEPF in-wall installation
- **First floor:** Wall framing and MEPF installation



DID YOU KNOW?

To date, over 2,000 modifications have been made to the structure of the building!



QUALITY CORNER

When any material is delivered to the site, PCL/CC completes checklists to ensure that the product meets all specifications and design requirements. In any area of the building, when a trade completes a scope of work, we use customized checklists to ensure everything is installed properly and meets the construction documents.



SAFETY TOPIC

Holiday Safety

Often, before a holiday or returning from one, is when we see an increase in incidents on our sites. It's imperative to maintain focus leading up to a holiday and to review site conditions and hazards when returning to work to refocus the trade staff.



This project is funded through appropriates made by the North Dakota 68th Legislative Assembly.